

Peppol

The future is open

Peppol Business Message Envelope (SBDH)

Status: Published - Version: 2.0.2
Last updated: 2026-07-02

OpenPeppol AISBL
Rond-point Schuman 6, box 5
1040 Brussels Belgium

info@peppol.eu
www.peppol.org



Table of Contents

Revision History	4
Contributors	5
Persons	5
1 Introduction	6
1.1 Terminology.....	6
1.2 Normative references	6
1.3 When to use the envelope.....	7
2 SBDH Usage	7
2.1 Party Identifiers.....	7
2.2 XML Considerations	7
2.3 Non-XML Payloads	7
2.3.1 Binary Payloads	8
2.3.2 Non-XML Text Payloads	9
2.4 Peppol Process ID and Document Type ID.....	10
2.5 Country codes of the End Users	11
2.6 MLS Customisation Options	12
2.6.1 Specific MLS Receiver	12
2.6.2 Specific MLS Usage	13
2.7 Additional attributes	13
2.7.1 Reserved attributes	14
2.8 Internet Media Type	15
2.9 Message Envelope Schema.....	15
3 Appendix	19
3.1 Example instance document (non-normative).....	19
3.2 Example instance document with MLS Customisations (non-normative) ..	20
3.3 Message Envelope Extension XML Schema	21

Statement of originality

This deliverable contains original unpublished work except where clearly indicated otherwise. Acknowledgement of previously published material and of the work of others has been made through appropriate citation, quotation or both.

Statement of copyright



This deliverable is released under the terms of the Creative Commons Licence accessed through the following link: <https://creativecommons.org/licenses/by-nc-nd/4.0/>

You are free to:

Share — copy and redistribute the material in any medium or format.

The licensor cannot revoke these freedoms as long as you follow the license terms.

Revision History

Version	Date	Description of changes
1.0.0	2014-01-15	Initial version
1.1	2018-08-31	Added the possibility to specify document type identifier scheme and process identifier scheme Added the possibility to specify additional attributes
1.1.1	2018-09-28	Fixed error in chapter 2.5 in the example of an additional attribute without a value Added note on attribute case sensitivity in chapter 2.5.
1.2	2019-02-01	Added section for non-XML payloads
1.2.1	2020-03-11	Added chapter 2.6 on the Internet Media Type Remove the references to the Peppol Policy for use of Identifiers 3.x Updated to the new branding
2.0	2023-03-13	Added chapter 2.5 on country code Removed the reference to AS2
2.0.1	2023-08-17	Fixed lower bound cardinality of “Scope” element in chapter 2.9
2.0.2	2026-07-02	Added clarification statement in chapter 2.3.1 and 2.3.2. Added chapter 2.6 on MLS Customisation Options Added reserved additional attributes MLS_TYPE and MLS_TO Using new document layout

Contributors

Persons

Martin Forsberg, ESV

Markus Gudmundsson, Unimaze Software

Jostein Frømyr, Difi/Edisys Consulting

Steinar Overbeck Cook

Oriol Bausà, Invinet

Sven Rasmussen, DIGST

Stefano Monti, EPOCA/IntercentER

Philip Helger, Bundesrechenzentrum/OpenPeppol Operating Office

Erlend Klakegg Bergheim, Difi

Bård Langøy, Pagero

Jerry Dimitriou, OpenPeppol Operating Office

Risto Collanus, Visma

Hans Berg, Tickstar

1 Introduction

2 The Peppol Message Envelope is a customization of the UN/CEFACT Standard
3 Business Document Header (SBDH) [SBDH]. The customization represents a true
4 subset of the standard XML Schemas and any instance conformant to this specification
5 is also conformant to the SBDH.

6 The Peppol Message Envelope makes it possible for Access points to:

- 7 • Route messages without having to access to the business message/data
- 8 • Always use the same way of identifying sender/receiver, document type and
9 process
- 10 • Overcome issues with namespace or versioning of the payload
- 11 • Provide additional attributes that help processing the payload

12 The Message Envelope can also carry some of the infrastructure elements when using
13 protocols like AS4. The creation of the Message Envelope is RECOMMENDED to be
14 done already in the system issuing the business document, but it may also be created by
15 a service provider who is preparing the document for transportation to the receiver's
16 Access Point. This specification does not recommend any particular setup with regard to
17 this when the Message Envelope is not created in the issuing system.

18 1.1 Terminology

19 The keywords "MUST", "MUST NOT", "REQUIRED", "SHALL", "SHALL NOT",
20 "SHOULD", "SHOULD NOT", "RECOMMENDED", "MAY", and "OPTIONAL" in this
21 document are to be interpreted as described in RFC 2119 [RFC2119].

22 1.2 Normative references

- 23 [RFC2119] "Key words for use in RFCs to Indicate Requirement Levels",
24 <https://www.ietf.org/rfc/rfc2119.txt>
- 25 [MLS] "Peppol Message Level Status"
26 <https://docs.peppol.eu/edelivery/>
- 27 [PFUOI] "Peppol Policy for use of Identifiers",
28 <https://docs.peppol.eu/edelivery/>
- 29 [PNP] "Peppol Network Policy",
30 <https://docs.peppol.eu/edelivery/>
- 31 [SBDH] "Standard Business Document Header Technical Specification",
32 [https://www.gs1.org/standards/edi-xml-gdsn-gs1-uncefact-xml-profiles/sbdh-
33 technical-specifications/1-3](https://www.gs1.org/standards/edi-xml-gdsn-gs1-uncefact-xml-profiles/sbdh-technical-specifications/1-3)

34 [SPIS] “Peppol Service Provider Identification Scheme”,
35 <https://docs.peppol.eu/edelivery/>

36 **1.3 When to use the envelope**

37 Unless other policies are decided for the Peppol infrastructure, the following principals
38 describe when the envelope is to be applied.

- 39 • Business Message Envelope **MUST** be applied for all messages exchanged with
40 AS4

41 **2 SBDH Usage**

42 **2.1 Party Identifiers**

43 The required Receiver party identifier in the Message Envelope header is the one that
44 corresponds to a Peppol Participant registered in the SML/SMP. Also, the Sender party
45 identifier is required. The structure of the identifier **MUST** follow the “Peppol Policy for
46 use of Identifiers” [PFUOI].

47 In cases where the sender is not registered in SML/SMP the identifier of the sender
48 **MUST** be used as if the sender would be registered.

49 Non-normative example:

```
50 <Sender>  
51   <Identifier Authority="iso6523-actorid-upis">0088:7315458756324</Identifier>  
52 </Sender>  
53 <Receiver>  
54   <Identifier Authority="iso6523-actorid-upis">0088:4562458856624</Identifier>  
55 </Receiver>
```

56 **2.2 XML Considerations**

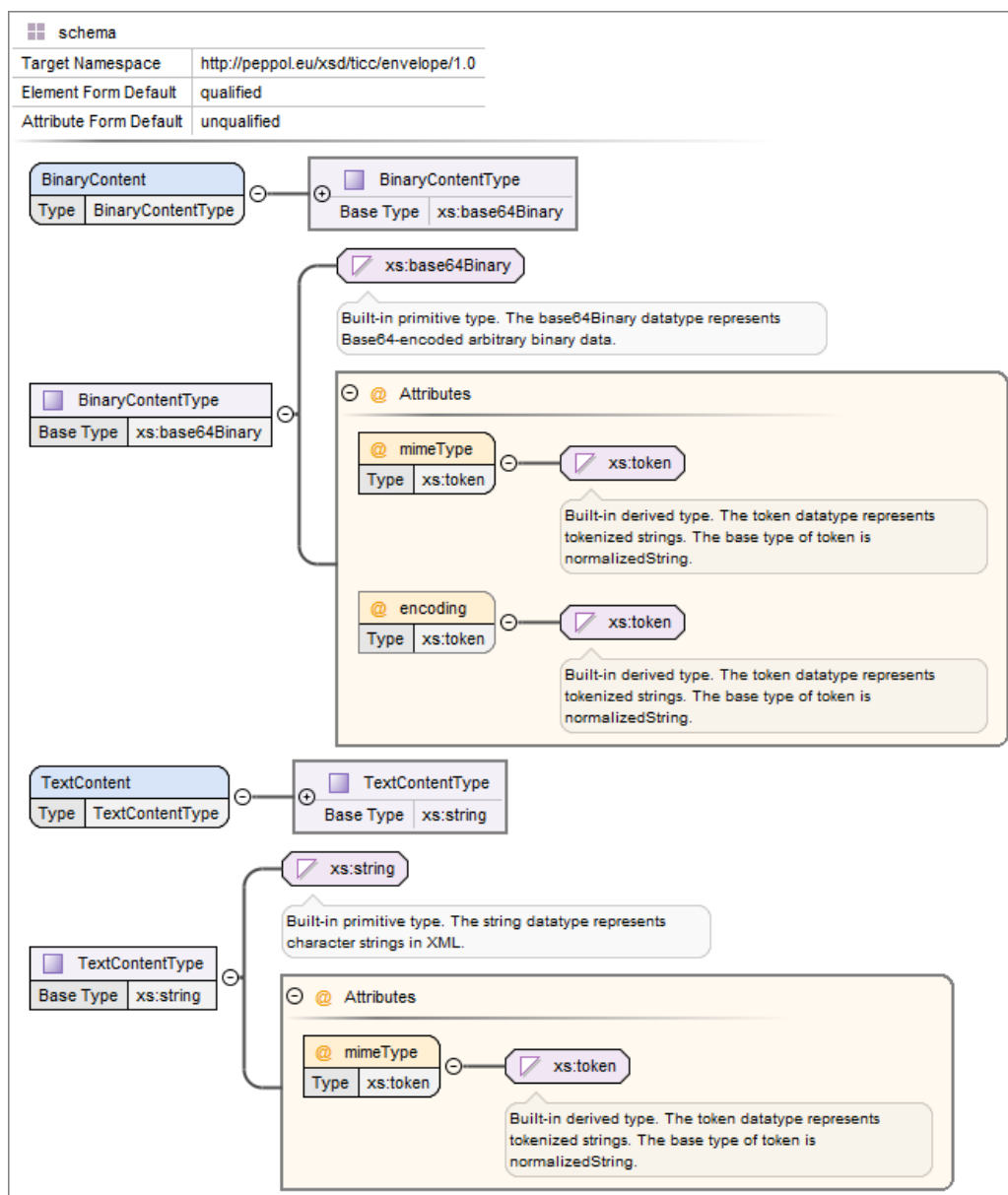
57 Since the envelope and included business document becomes one single XML instance,
58 both the envelope and the business document **MUST** have the same character
59 encoding. The included business document **MUST** be well-formed. The Message
60 Envelope **MUST NOT** contain another Message Envelope.

61 **2.3 Non-XML Payloads**

62 Several processes that are supported in Peppol require the transportation of binary data
63 and non-XML text as payload. In order for Peppol to support the transmission of non-
64 XML payloads, an XML wrapper has been defined that **MUST** be used for wrapping
65 these payloads.

66 The XML wrapper defined in this document MUST NOT be used to wrap another XML
 67 wrapper neither as binary nor as text payload.

68 The following picture depicts the XML schema of the XML wrapper (see chapter 3.3 for
 69 the full XML schema):



70

71

Figure 1: XML Schema for XML wrapper

72 2.3.1 Binary Payloads

73 To support the transmission of binary payloads they should be transformed and
 74 packaged as follows:

- 75 1. The binary payload must be Base64-encoded
- 76 2. The encoded payload MUST be included inside the XML element
- 77 `BinaryContent`. The XML namespace URI for this element MUST be
- 78 `http://peppol.eu/xsd/ticc/envelope/1.0`.
- 79 3. The attribute `mimeType` MUST be set to the respective payload MIME type.
- 80 4. For text-based payloads, the optional `encoding` attribute MUST be used if the
- 81 source encoding is different than the encoding of the surrounding XML document.
- 82 At least the “UTF-8” encoding MUST be supported.

83 This wrapper MUST NOT be used for plain XML payload.

84 Non-normative example:

```
85 <?xml version="1.0" encoding="utf-8"?>
86 <StandardBusinessDocument xmlns=
87 "http://www.unece.org/cefact/namespaces/StandardBusinessDocumentHeader">
88   <StandardBusinessDocumentHeader>
89     ...
90   </StandardBusinessDocumentHeader>
91   <BinaryContent xmlns="http://peppol.eu/xsd/ticc/envelope/1.0"
92     mimeType="application/vnd.etsi.asic-e+zip"
93     encoding="iso-8859-1">
94     ABCD45678922 ...
95   </BinaryContent>
96 </StandardBusinessDocument>
```

97 2.3.2 Non-XML Text Payloads

98 For text data, there is no need of a container, as it can be placed directly as payload

99 inside a `TextContent` XML element. The XML namespace URI for this element must

100 be `http://peppol.eu/xsd/ticc/envelope/1.0`. The attribute `mimeType` MUST

101 be set to the respective payload MIME type.

102 Note:

- 103 • If the text payload contains XML special characters (e.g. ‘<’ or ‘>’), they MUST be
- 104 escaped using XML encoding or alternatively the data needs to be wrapped
- 105 inside a CDATA element, so the XML remains well formed.
- 106 • If a text payload is embedded inside the `TextContent` element, it MUST use the
- 107 same character encoding as the surrounding XML, otherwise the
- 108 `BinaryContent` data element SHOULD be used.

109 This wrapper MUST NOT be used for plain XML payload.

110 Non-normative example:

```
111 <?xml version="1.0" encoding="utf-8"?>
```

```

112 <StandardBusinessDocument xmlns=
113 "http://www.unece.org/cefact/namespaces/StandardBusinessDocumentHeader">
114   <StandardBusinessDocumentHeader>
115     ...
116   </StandardBusinessDocumentHeader>
117   <TextContent xmlns="http://peppol.eu/xsd/ticc/envelope/1.0"
118     mimeType="Application/EDIFACT">
119 UNB+UNOA:2+9930711378399:14+7798032711116:14+160927:2252+EW861380947'UNH+18
120 6453437+CONTRL:D:96A:UN:EAN002'UCI+F6GVY+7658032710006:14+9930711378111:14+
121 8'UCM+3HHL0+ORDERS:D:96A:UN:EAN008+7'UNT+4+186453437'UNZ+1+EW861380947'
122   </TextContent>
123 </StandardBusinessDocument>

```

124 2.4 Peppol Process ID and Document Type ID

125 The values of Process ID and Document Type ID are necessary in the SML/SMP
126 discovery process to retrieve the relevant service metadata. Both values should be
127 mapped to the element located at:

```

128 StandardBusinessDocument/StandardBusinessDocumentHeader/BusinessScope/Scope
129 /InstanceIdentifier

```

130 The respective identifier schemes are to be located in the following element (new in
131 v1.1):

```

132 StandardBusinessDocument/StandardBusinessDocumentHeader/BusinessScope/Scope
133 /Identifier

```

134 For backwards compatibility reasons (from version 1.1 to 1.0) – if the identifier schemes
135 are missing – the default process scheme identifier `cenbii-procid-ubl` and the
136 default document type identifier scheme `busdox-docid-qns` MUST be used.

137 The qualifier located at
138 `/StandardBusinessDocument/StandardBusinessDocumentHeader/Business`
139 `Scope/Scope/Type` is used to distinguish the meaning of the values by using codes:
140 `DOCUMENTID` (for a document type identifier) and `PROCESSID` (for process identifiers).

141 Non-normative example without identifier schemes:

```

142 <Scope>
143   <Type>DOCUMENTID</Type>
144   <InstanceIdentifier
145 >urn:oasis:names:specification:ubl:schema:xsd:Invoice-
146 2::Invoice##urn:www.cenbii.eu:transaction:biitrns010:ver2.0:extended:urn:ww
147 w.peppol.eu:bis:peppol4a:ver2.0::2.1</InstanceIdentifier>
148   </Scope>
149   <Scope>
150     <Type>PROCESSID</Type>
151     <InstanceIdentifier
152 >urn:www.cenbii.eu:profile:bii04:ver1.0</InstanceIdentifier>
153   </Scope>

```

154 Non-normative example including identifier schemes (possible since v1.1 of this
 155 specification):

```

156 <Scope>
157   <Type>DOCUMENTID</Type>
158   <InstanceIdentifier
159 >urn:oasis:names:specification:ubl:schema:xsd:Invoice-
160 2::Invoice##urn:www.cenbii.eu:transaction:biitrns010:ver2.0:extended:urn:ww
161 w.peppol.eu:bis:peppol4a:ver2.0::2.1</InstanceIdentifier>
162   <Identifier>busdox-docid-qns</Identifier>
163 </Scope>
164 <Scope>
165   <Type>PROCESSID</Type>
166   <InstanceIdentifier
167 >urn:www.cenbii.eu:profile:bii04:ver1.0</InstanceIdentifier>
168   <Identifier>cenbii-procid-ubl</Identifier>
169 </Scope>
    
```

170 2.5 Country codes of the End Users

171 To satisfy the reporting requirements for traffic statistics, the country code of the
 172 business level sender MUST be provided. The business-level sender is the C1 node in
 173 the 4-corner model. The information provided in the envelope complements the identifier
 174 information on the messaging level.

175 The country code MUST be provided in every instance of the envelope. The value of the
 176 country code MUST be provided according to ISO-3166-1 in the Alpha-2 notation (e.g.
 177 “BE” representing Belgium). Other notations MUST NOT be used. The value MUST
 178 follow this case-sensitive regular expression:

```
179 [A-Z0-9] [A-Z0-9]
```

180 Kosovo is a special case: It can be represented using either the code **XK**¹ or the code
 181 **1A**².

182 The country code of C1 MUST be known by the creator of the envelope.

183 The qualifier located at
 184 `/StandardBusinessDocument/StandardBusinessDocumentHeader/Business`
 185 `Scope/Scope/Type` is used to distinguish the meaning of values by using codes:
 186 `COUNTRY_C1` MUST be used for C1 country code. The country code value itself is
 187 mapped to the element located at:

```
188 StandardBusinessDocument/StandardBusinessDocumentHeader/BusinessScope/Scope
189 /InstanceIdentifier
```

¹ XK is a "user assigned" ISO 3166 code not designated by the standard, but used by the European Commission, Switzerland, the Deutsche Bundesbank and other organisations.

² 1A is used by the Publications Office of the EU and part of the Peppol PoAC code lists

190 Non-normative example for an exchange of a business document from a business level
191 sender in Belgium:

```
192 <Scope>  
193 <Type>COUNTRY_C1</Type>  
194 <InstanceIdentifier>BE</InstanceIdentifier>  
195 </Scope>
```

196 2.6 MLS Customisation Options

197 This section describes customisation options for the Peppol Message Level Status
198 (MLS).

199 2.6.1 Specific MLS Receiver

200 By default, an MLS message is addressed to the SPIS Main ID (see [SPIS]). To re-route
201 an MLS to a different receiver, the sender of a business document MAY provide an
202 alternate receiver in the envelope. Note the limitations imposed by the MLS specification
203 on the selection of the MLS Receiver.

204 The qualifier located at
205 `/StandardBusinessDocument/StandardBusinessDocumentHeader/Business`
206 `Scope/Scope/Type` is used to distinguish the meaning of values by using codes:
207 `MLS_TO` MUST be used to indicate the receiving participant identifier for the MLS (see
208 [MLS]).

209 The participant identifier value MUST be mapped to the element located at:

```
210 StandardBusinessDocument/StandardBusinessDocumentHeader/BusinessScope/Scope  
211 /InstanceIdentifier
```

212 The participant identifier scheme MUST be mapped to the element located at:

```
213 StandardBusinessDocument/StandardBusinessDocumentHeader/BusinessScope/Scope  
214 /Identifier
```

215 Non-normative example for an exchange of a business document that wants to receive
216 the MLS using the participant identifier `iso6523-actorid-upis::0242:987654-`
217 `TEST`:

```
218 <Scope>  
219 <Type>MLS_TO</Type>  
220 <InstanceIdentifier>0242:987654-TEST</InstanceIdentifier>  
221 <Identifier>iso6523-actorid-upis</Identifier>  
222 </Scope>
```

223 2.6.2 Specific MLS Usage

224 By default, the MLS Usage is specified in the Peppol Network Policy (see [PNP]). To
 225 explicitly request only specific types of MLS messages, the sender of a business
 226 document MAY request an explicit usage type.

227 The qualifier located at
 228 `/StandardBusinessDocument/StandardBusinessDocumentHeader/Business`
 229 `Scope/Scope/Type` is used to distinguish the meaning of values by using codes:
 230 `MLS_TYPE` MUST be used to indicate the MLS usage type (see [MLS]).

231 The MLS usage type itself MUST be mapped to the element located at:

232 `StandardBusinessDocument/StandardBusinessDocumentHeader/BusinessScope/Scope`
 233 `/InstanceIdentifier`

234 Non-normative example for an exchange of a business document that wants to receive
 235 only negative MLS messages:

```
236 <Scope>
237   <Type>MLS_TYPE</Type>
238   <InstanceIdentifier>FAILURE_ONLY</InstanceIdentifier>
239 </Scope>
```

240 2.7 Additional attributes

241 Additional attributes MAY be provided that can be used to support the processing of the
 242 payload. These additional attributes are represented as key-value-pairs.

243 Each additional attribute is represented as a
 244 `/StandardBusinessDocument/StandardBusinessDocumentHeader/Business`
 245 `Scope/Scope` element.

246 The attribute key must be contained in the child element `Type`. All attribute keys listed in
 247 chapter 2.7.1 are reserved and cannot be used as an additional attribute key. The
 248 attribute key MUST be unique within an SBDH. The attribute key MUST be handled case
 249 sensitive.

250 The attribute value must be contained in the child element `InstanceIdentifier`. The
 251 attribute value MAY be omitted.

252 Non-normative example with two additional attributes:

```
253 <BusinessScope>
254   <!-- other mandatory values -->
255   <Scope>
256     <Type>TECHNICAL_VALIDATION_URL</Type>
257     <InstanceIdentifier>http://peppol.example.org/as4</InstanceIdentifier>
258   </Scope>
259 </BusinessScope>
```

```

260     <Type>TECHNICAL_VALIDATION_REQUIRED</Type>
261     <InstanceIdentifier>>true</InstanceIdentifier>
262   </Scope>
263 </BusinessScope>
    
```

264 Non-normative example with one additional attribute that has no value:

```

265 <BusinessScope>
266   <!-- other mandatory values -->
267   <Scope>
268     <Type>IndicatorAttribute</Type>
269     <InstanceIdentifier />
270   </Scope>
271 </BusinessScope>
    
```

272 2.7.1 Reserved attributes

273 The following additional attribute keys are reserved for internal use in the Peppol network
 274 and MUST NOT be used for other purposes than the intended ones.

Attribute key	Description
COUNTRY_C1	Country code of original sender of the document (C1) (see chapter 2.5). Reserved since v2.0 of this specification.
COUNTRY_C4	Reserved for potential future use.
DOCUMENTID	Specifies the Peppol Document Type Identifier value (see chapter 2.4)
MLS_TO	Specific MLS receiver (see chapter 2.6.1). Reserved since v2.0.2 of this specification.
MLS_TYPE	Specific MLS usage (see chapter 2.6.2). Reserved since v2.0.2 of this specification.
PROCESSID	Specifies the Peppol Process Identifier value (see chapter 2.4)
TECHNICAL_VALIDATION_URL	Reserved for potential future use.
TECHNICAL_VALIDATION_REQUIRED	Reserved for potential future use.

275 2.8 Internet Media Type

276 The MIME type or Content-Type for Peppol Message Envelope documents MUST be
 277 either `application/xml` or `text/xml` (they can be used interchangeably³).

278 2.9 Message Envelope Schema

279 The following table contains requirements on every element in the schema. The number
 280 of “+” signs in front of the Schema object name indicate the nesting level inside the XML
 281 tree.

Schema object	Requirement name	Requirement value
StandardBusinessDocument	Occurrence	1..1
+ StandardBusinessDocument Header	Occurrence	1..1
+ + HeaderVersion	Occurrence	1..1
	Type	xs:string
	Value	Use fixed value <code>1.0</code>
+ + Sender	Occurrence	1..1
+ + + Identifier	Occurrence	1..1
	Type	xs:string
	Value	Use the format XXXX:AAAAAAAA where XXXX is the type of identifier (such as 0088 for GS1 GLN) and AAAAAAAA the actual identifier
+ + + + @Authority	Occurrence	1..1
	Type	xs:string
	Value	Use fixed value <code>iso6523-actorid-upis</code>

³ See <https://tools.ietf.org/html/rfc7303#section-9.2>

Schema object	Requirement name	Requirement value
+ + Receiver	Occurrence	1..1
+ + + Identifier	Occurrence	1..1
	Type	xs:string
	Value	Use the format XXXX:AAAAAAAAA where XXXX is the type of identifier (such as 0088 for GS1 GLN) and AAAAAAAAA the actual identifier
+ + + + @Authority	Occurrence	1..1
	Type	xs:string
	Value	Use fixed value iso6523-actorid-upis
+ + DocumentIdentification	Occurrence	1..1
+ + + Standard	Occurrence	1..1
	Type	xs:string
	Value	The standard of the enveloped business message, normally described by use of the XML namespace of the business message root element (such as urn:oasis:names:specific ation:ubl:schema:xsd:Ord er-2)
+ + + TypeVersion	Occurrence	1..1
	Type	xs:string
	Value	The version number of the enveloped business message (such as the value 2.1 for

Schema object	Requirement name	Requirement value
		OASIS UBL 2.1 or 2.0 for OASIS UBL 2.0)
+++ InstanceIdentifier	Occurrence	1..1
	Type	xs:string
	Value	<p>An informative unique ID created by the issuer of the envelope. The <code>InstanceIdentifier</code> MUST be unique for each Business Message Envelope being created. This ID is not the same as the ID of the business message (such as the Invoice Number). It is not the same as a transmission Message ID generated by the application sending the message (as defined in AS4).</p> <p>The <code>InstanceIdentifier</code> MUST be globally unique, and it is RECOMMENDED to use UUID (such as <code>118e3040-51d2-11e3-8f96-0800200c9a66</code>)</p>
+++ Type	Occurrence	1..1
	Type	xs:string
	Value	Message type - mandatory in SBDH. XML local element name of the root-element in the business message.
+++ CreationDateAndTime	Occurrence	1..1
	Type	xs:dateTime

Schema object	Requirement name	Requirement value
	Value	<p>The date and time for when this envelope was created. It is NOT necessarily the same as the issue date of the business document (such as the invoice) being enveloped. It is NOT necessarily the date time for transmission.</p> <p>The format of the value of this MUST include time zone information.</p> <p>Use this format for UTC: 2014-01-17T09:30:00Z (Where the Z indicates UTC)</p> <p>Or specify offset from UTC by adding the time difference: 2014-01-17T09:30:00+02:00 (Where +02:00 indicates 2 hours positive offset to UTC)</p>
+ + BusinessScope	Occurrence	1..1
+ + + Scope	Occurrence	3..unbounded
	Description	Repeat for each mandatory qualifier. See chapters 2.4, 2.5 and 2.6
+ + + + Type	Occurrence	1..1
	Type	xs:string
	Value	Qualifier of how to understand the InstanceIdentifier element. Codes.
+ + + + InstanceIdentifier	Occurrence	1..1

Schema object	Requirement name	Requirement value
	Type	xs:string
	Value	The values matching the type qualified by the <code>Type</code> element.
++++ Identifier	Occurrence	0..1
	Type	xs:string
	Value	Identification scheme for identifiers. See chapters 2.4 and 2.6.1.
+ xs:any	Occurrence	1..1
	Value	Business message goes here.

282

2833 Appendix

284 3.1 Example instance document (non-normative)

```

285 <?xml version="1.0" encoding="UTF-8"?>
286 <StandardBusinessDocument xmlns:xs="http://www.w3.org/2001/XMLSchema"
287 xmlns="http://www.unece.org/cefact/namespaces/StandardBusinessDocumentHeader">
288   <StandardBusinessDocumentHeader>
289     <HeaderVersion>1.0</HeaderVersion>
290     <Sender>
291       <Identifier Authority="iso6523-actorid-
292 upis">0088:7315458756324</Identifier>
293     </Sender>
294     <Receiver>
295       <Identifier Authority="iso6523-actorid-
296 upis">0088:4562458856624</Identifier>
297     </Receiver>
298     <DocumentIdentification>
299       <Standard>urn:oasis:names:specification:ubl:schema:xsd:Invoice-
300 2</Standard>
301       <TypeVersion>2.1</TypeVersion>
302       <InstanceIdentifier>123123</InstanceIdentifier>
303       <Type>Invoice</Type>
304       <CreationDateAndTime>2019-02-01T15:42:10Z</CreationDateAndTime>
305
    
```

```

306     </DocumentIdentification>
307     <BusinessScope>
308         <Scope>
309             <Type>DOCUMENTID</Type>
310             <InstanceIdentifier
311 >urn:oasis:names:specification:ubl:schema:xsd:Invoice-
312 2::Invoice##urn:cen.eu:en16931:2017#compliant#urn:fdc:peppol.eu:2017:poacc:
313 billing:3.0::2.1</InstanceIdentifier>
314             <Identifier>busdox-docid-qns</Identifier>
315         </Scope>
316         <Scope>
317             <Type>PROCESSID</Type>
318             <InstanceIdentifier
319 >urn:fdc:peppol.eu:2017:poacc:billing:01:1.0</InstanceIdentifier>
320             <Identifier>cenbii-procid-ubl</Identifier>
321         </Scope>
322         <Scope>
323             <Type>COUNTRY_C1</Type>
324             <InstanceIdentifier>BE</InstanceIdentifier>
325         </Scope>
326     </BusinessScope>
327 </StandardBusinessDocumentHeader>
328 <Invoice
329 xmlns:cbc="urn:oasis:names:specification:ubl:schema:xsd:CommonBasicComponen
330 ts-2"
331 xmlns:cac="urn:oasis:names:specification:ubl:schema:xsd:CommonAggregateComp
332 onents-2" xmlns="urn:oasis:names:specification:ubl:schema:xsd:Invoice-2">
333     <!-- reduced instance file -->
334 </Invoice>
335 </StandardBusinessDocument>
    
```

336 3.2 Example instance document with MLS Customisations (non- 337 normative)

```

338 <?xml version="1.0" encoding="UTF-8"?>
339 <StandardBusinessDocument xmlns:xs="http://www.w3.org/2001/XMLSchema"
340 xmlns="http://www.unece.org/cefact/namespaces/StandardBusinessDocumentHeade
341 r">
342     <StandardBusinessDocumentHeader>
343         <HeaderVersion>1.0</HeaderVersion>
344         <Sender>
345             <Identifier Authority="iso6523-actorid-
346 upis">0088:7315458756324</Identifier>
347         </Sender>
348         <Receiver>
349             <Identifier Authority="iso6523-actorid-
350 upis">0088:4562458856624</Identifier>
351         </Receiver>
352         <DocumentIdentification>
353             <Standard>urn:oasis:names:specification:ubl:schema:xsd:Invoice-
354 2</Standard>
355             <TypeVersion>2.1</TypeVersion>
    
```

```
356     <InstanceIdentifier>123123</InstanceIdentifier>
357     <Type>Invoice</Type>
358     <CreationDateAndTime>2019-02-01T15:42:10Z</CreationDateAndTime>
359 </DocumentIdentification>
360 <BusinessScope>
361     <Scope>
362         <Type>DOCUMENTID</Type>
363         <InstanceIdentifier
364 >urn:oasis:names:specification:ubl:schema:xsd:Invoice-
365 2::Invoice##urn:cen.eu:en16931:2017#compliant#urn:fdc:peppol.eu:2017:poacc:
366 billing:3.0::2.1</InstanceIdentifier>
367         <Identifier>busdox-docid-qns</Identifier>
368     </Scope>
369     <Scope>
370         <Type>PROCESSID</Type>
371         <InstanceIdentifier
372 >urn:fdc:peppol.eu:2017:poacc:billing:01:1.0</InstanceIdentifier>
373         <Identifier>cenbii-procid-ubl</Identifier>
374     </Scope>
375     <Scope>
376         <Type>COUNTRY_C1</Type>
377         <InstanceIdentifier>BE</InstanceIdentifier>
378     </Scope>
379     <Scope>
380         <Type>MLS_TYPE</Type>
381         <InstanceIdentifier>ALWAYS_SEND</InstanceIdentifier>
382     </Scope>
383     <Scope>
384         <Type>MLS_TO</Type>
385         <InstanceIdentifier>0242:987654</InstanceIdentifier>
386         <Identifier>iso6523-actorid-upis</Identifier>
387     </Scope>
388 </BusinessScope>
389 </StandardBusinessDocumentHeader>
390 <Invoice
391 xmlns:cbc="urn:oasis:names:specification:ubl:schema:xsd:CommonBasicComponen
392 ts-2"
393 xmlns:cac="urn:oasis:names:specification:ubl:schema:xsd:CommonAggregateComp
394 onents-2" xmlns="urn:oasis:names:specification:ubl:schema:xsd:Invoice-2">
395     <!-- reduced instance file -->
396 </Invoice>
397 </StandardBusinessDocument>
```

398 3.3 Message Envelope Extension XML Schema

399 The normative version of the Message Envelope Extension XML Schema can be found
400 at <https://docs.peppol.eu/edelivery/>.